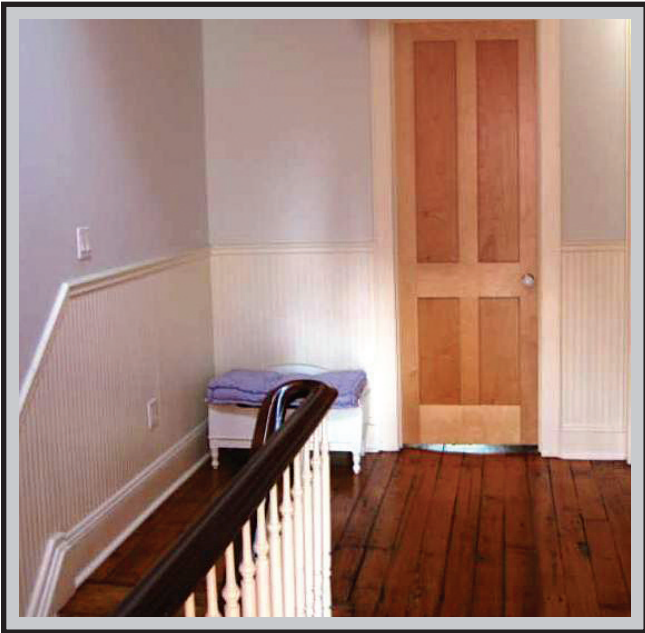


# Beadboard

Another valued product from the Kerfkore Company



The Kerfkore Company now offers a complete line of **Beadboard** to compliment its bendable wood panel products...

**Beadboard** panels are available in a 4'x 8' size with 1 1/2" standard groove spacing. Assorted groove spacing available upon request.

**Beadboard** panels are available in 1/8", 3/16", 1/4", 5/16", 3/8", and 1/2" thickness. Additional thicknesses available upon request.

**Beadboard** panels are available in the following board types:  
Plain MDF, Veneer on MDF Core and Veneer on Plywood Core

Species Selections are as follows:  
Plain MDF, Primed MDF, Cherry, Birch, Alder, Hickory, White Oak, Red Oak, Mahogany, Maple and Ash.  
Other species available upon request.

All veneer on MDF core is Plain Sliced veneer.  
All veneer on Plywood core is Rotary Cut veneer.



# BEADBOARD SPECIFICATIONS

## PRODUCT DESCRIPTION

**Beadboard** panels are available in a variety of thickness either with or without veneer face. Plain Beadboard is made from an MDF core with standard bead spacing on 1½" on center. Other bead spacing is available upon request. Wood veneer faced **Beadboard** consists of a veneer face applied to MDF core. Veneer faces and panel thickness options are available. Also optional core materials are available as required.

## PRODUCT CHARACTERISTICS

Plain **Beadboard** is designed to be painted. It is suggested that all panels receive a prime coat before the top coat is applied. A light sanding between coats with a medium to fine sandpaper is recommended. It is best to do this before panels have been installed. **Beadboard** is also available with a prime coat applied at the factory.

Wood veneer **Beadboard** is ready for finishing. However it is recommended that the panels be lightly sanded with 180 grit paper to remove any raised grain due to moisture pick-up. Application of stain, sealer and clear top coat is recommended with sanding between coats using 220 grit sandpaper. Wood veneer is a natural product and may accept stain differently depending on the wood grain characteristics. Therefore it is recommended that a small sample be completely finished to evaluate the final results.

## PANEL MATERIALS

**Beadboard** is normally produced using a high quality MDF core. Optional cores such as, veneer core, FR core, NAF core and MR core products may also be available. Many veneer face options are available in addition to the ones listed.

## ATTACHMENT METHODS

For wall use as wanes coating the wall should be uniform and plumb. Beadboard can be applied over sheetrock, paneling or other flat surfaces. Beadboard can also be attached directly to wood stud walls provided they are straight and uniform. When using this method a cross stud will need to be located at the upper edge of the material for attachment. Attachment directly to metal studs is not recommended. It's best to apply drywall to metal studs and then apply the Beadboard to this material.

**Beadboard** can be attached to the wall with nails or construction grade adhesives. When using nails be sure to identify stud locations and nail into both vertical and horizontal studs.

When using adhesive follow the manufacturer's directions. Usually beads of adhesive are applied to the back of the panel and then pressed to the wall. Additional supports may be

required to ensure the panels stay aligned until the adhesive has set. The use of top cap and base rail is suggested to provide a completed project.

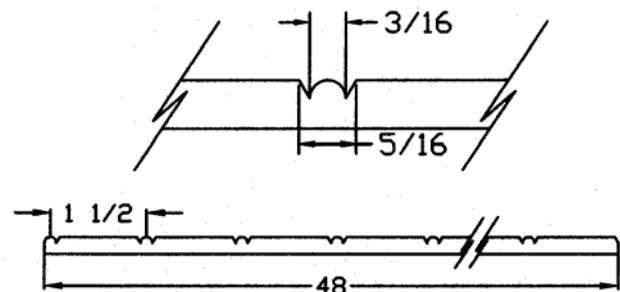
## PRODUCT CONDITIONING

**Beadboard** is constructed using engineered wood product for stability and uniformity. It very important that the material be conditioned by storing in the final location for a minimum of 3 to 4 days prior to installation. Extremes in either temperature or relative humidity can adversely affect the performance and dimensions.

## STORAGE

Products should be stored on a flat level surface with proper support. **Beadboard** should not be stored on concrete but elevated to allow for air circulation to prevent moisture pickup.

Complete technical and fabrication information can be found on our web site [www.kerfkore.com](http://www.kerfkore.com).



| Item #   | Product Description     | Thickness |
|----------|-------------------------|-----------|
| BB12FB   | Plain MDF               | 1/8"      |
| BB18FB   | Plain MDF               | 3/16"     |
| BB25FB   | Plain MDF               | 1/4"      |
| BB31FB   | Plain MDF               | 5/16"     |
| BB38FB   | Plain MDF               | 3/8"      |
| BB50FB   | Plain MDF               | 1/2"      |
| BB18FB-M | Maple Veneer on MDF     | 3/16"     |
| BB18FB-R | Red Oak Veneer on MDF   | 3/16"     |
| BB18FB-A | Ash Veneer on MDF       | 3/16"     |
| BB18FB-C | Cherry Veneer on MDF    | 3/16"     |
| BB18FB-L | Mahogany Veneer on MDF  | 3/16"     |
| BB18FB-W | White Oak Veneer on MDF | 3/16"     |
| BB18FB-H | Hickory Veneer on MDF   | 3/16"     |
| BB25LP-R | Red Oak Plywood         | 1/4"      |
| BB25LP-M | Maple Plywood           | 1/4"      |
| BB25LP-B | Birch Plywood           | 1/4"      |
| BB25LP-C | Cherry Plywood          | 1/4"      |